


The background of the image shows a dense array of network cables plugged into a patch panel. Several of the ports are illuminated with a bright red light, creating a series of glowing points that recede into the distance. The cables themselves are dark, and the overall lighting is dim, emphasizing the red highlights.

IP Live

Production System

SONY



IP Live

Production System

Transitioning to IP for Broadcast & Production

Steve Wynn

Sr. Solutions Architect

Sony Imaging Products & Solutions – Americas

Steven.Wynn@Sony.com

Disruptive change in broadcast architectures

- SDI to IP, profoundly disruptive infrastructure change
- What's the driver?
 - Digital TV evolves... ATSC 3.0/NextGen allows new broadcast products
 - Expanding the source product... HD to UHD, SDR to HDR... new channels/OTT ...
- How does the plant change to support new needs, in a flexible, practical, and supportable way
- Remote Production introduced new requirements
- IP Systems- planning, building, maintaining

Infrastructure Background

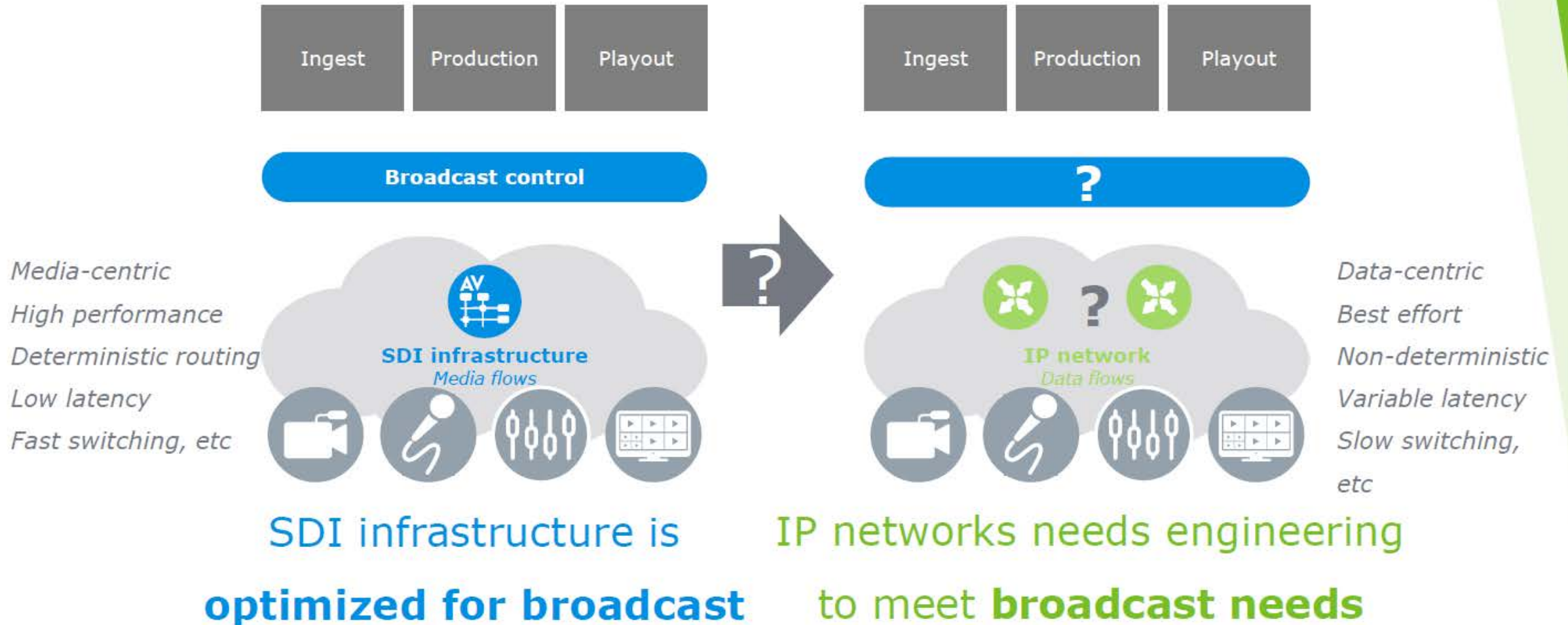
- Moving signals around, SDI (Serial Digital Interface)
- Moving to IP throughout... invasive networking overtakes infrastructure

The Production eco-system

SDI Serial Digital

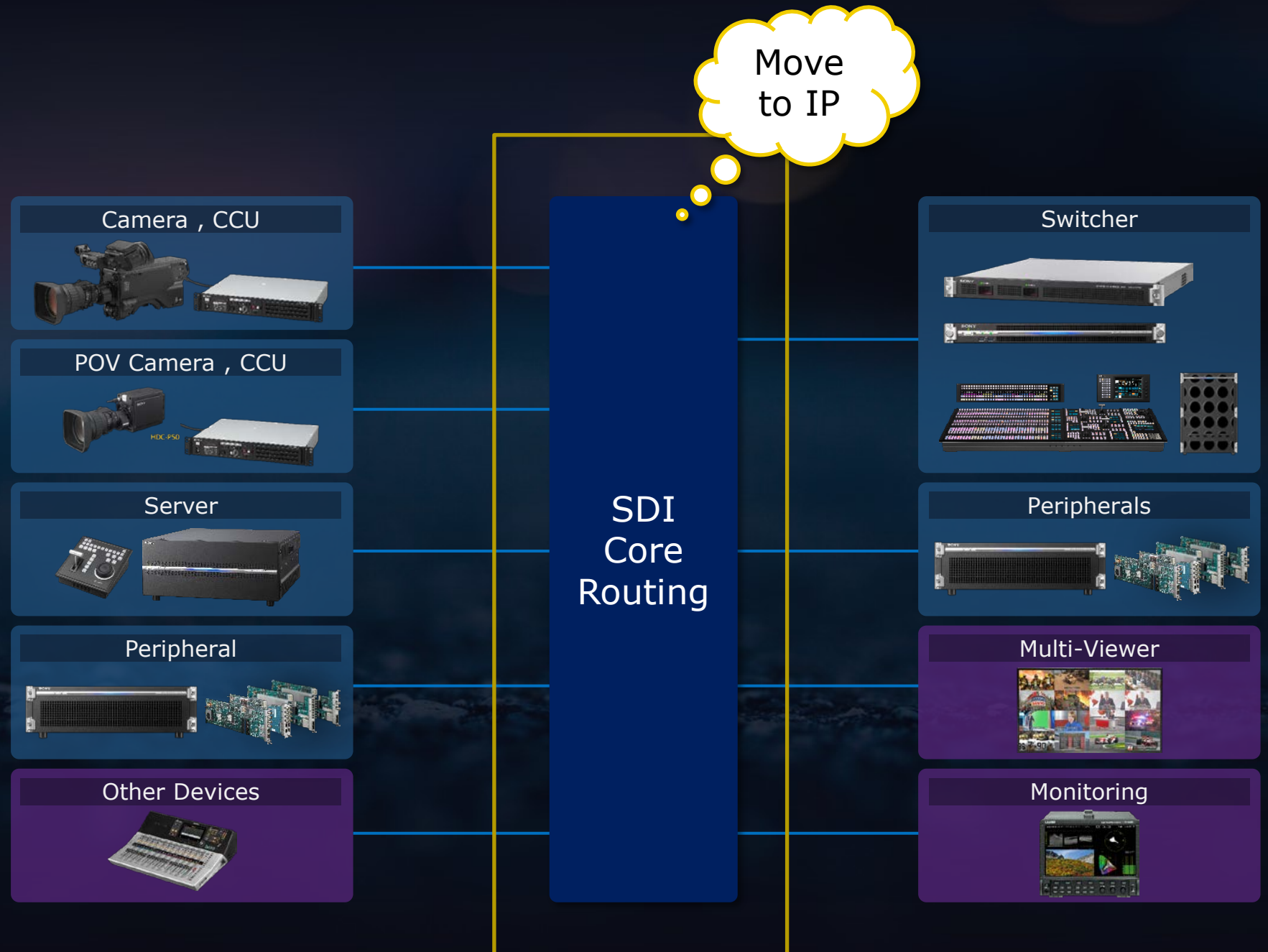


How to make **IP** fit **Broadcast**

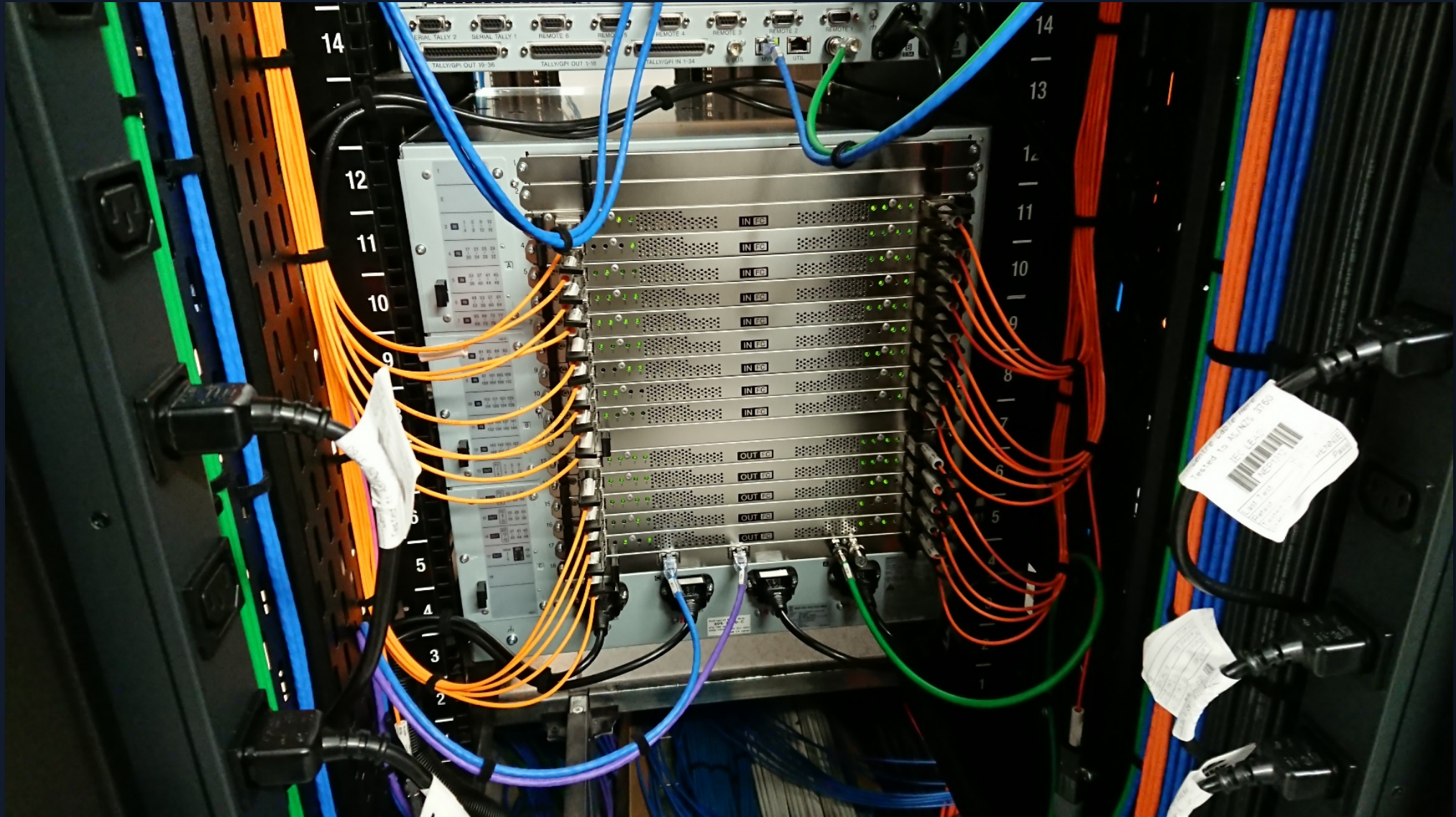


The Production eco-system

SDI
Serial Digital

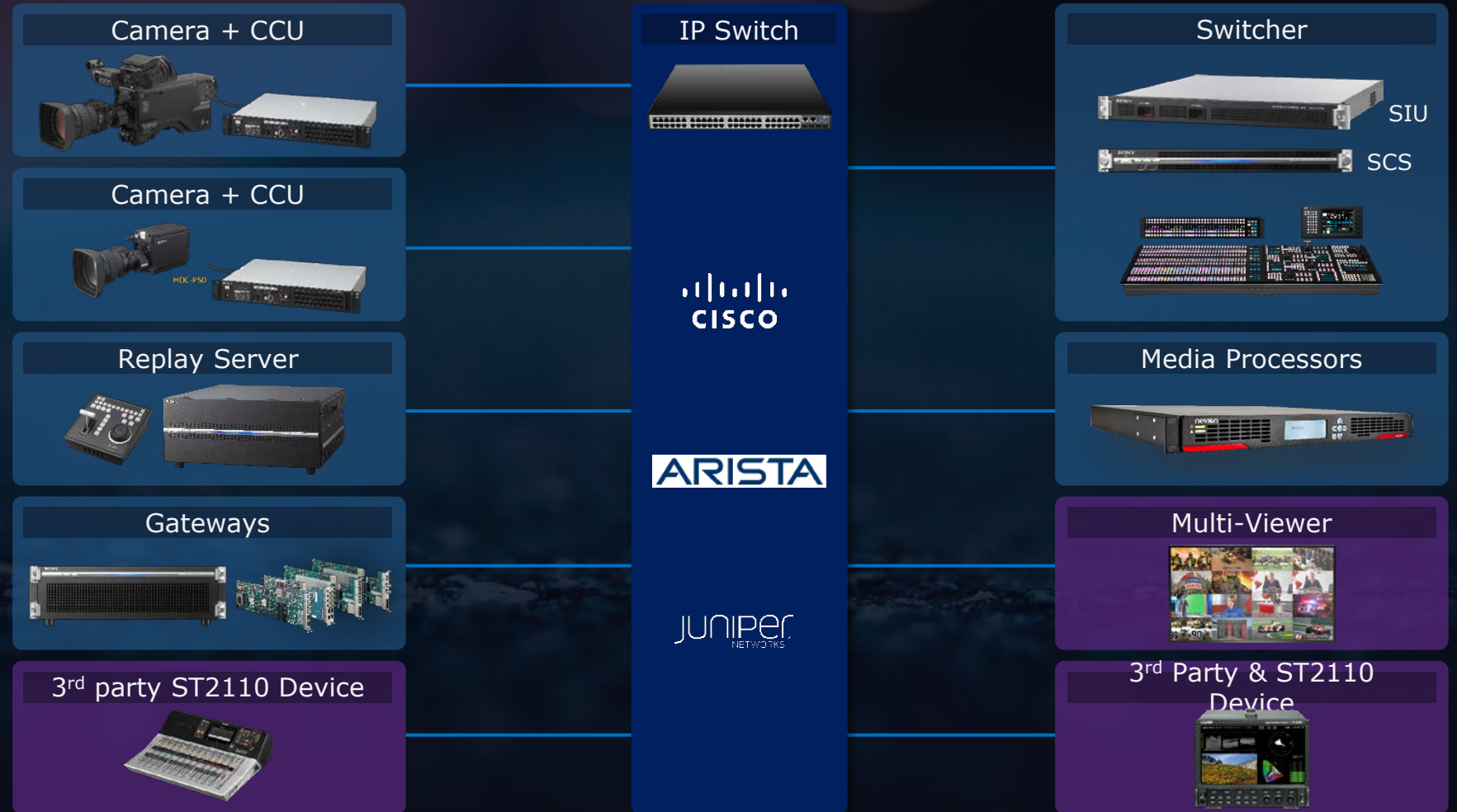


Streamlined, flexible IP signals



The Production eco-system

IP networked Systems



Practical migration of the plant- SDI to IP

- An SDI core... look ahead to the next tech refresh ... evaluate/plan for an IP core
- Changing the machinery and...
- new technical support (staff) requirements

The IP toolset

- We're past the bloody part 😊
- Standards help
- Upside: format flexibility, automation, resource sharing, path to cloud, ...

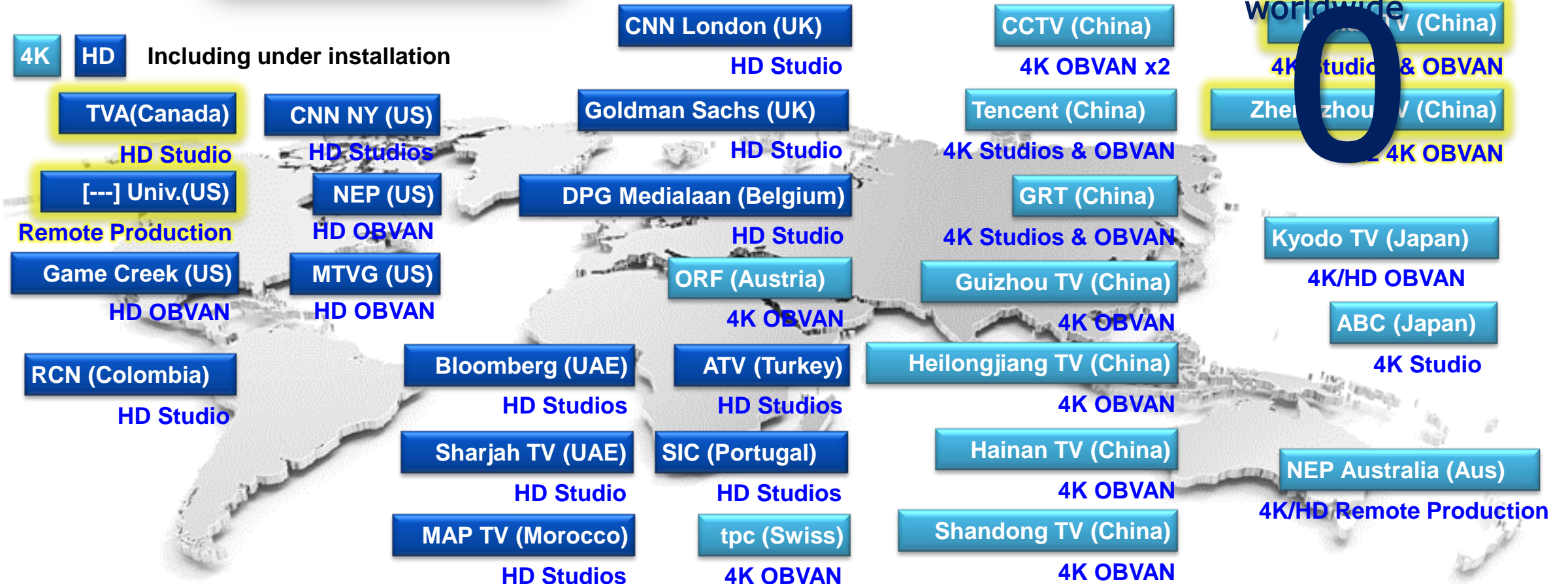
World-wide SONY "IP Live" Installations



MORE THAN
15

OBVAN/STUDIO systems
worldwide

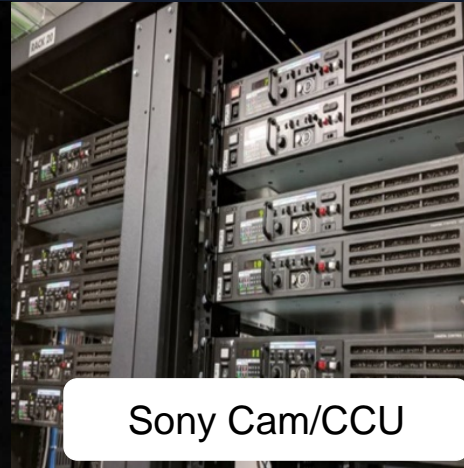
0



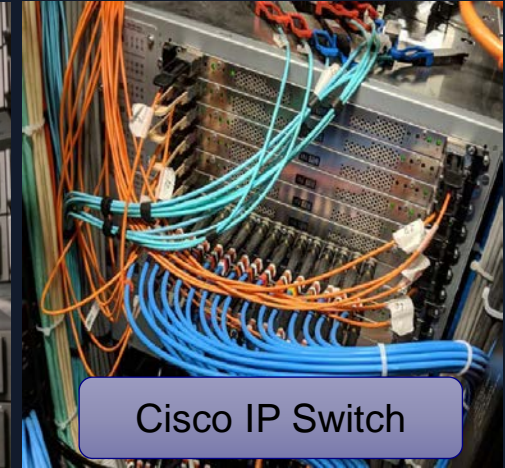
Sample projects: IP, multi-vendor



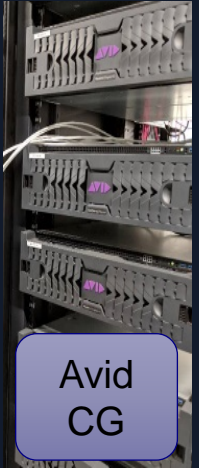
On-air Jan, 2019



Sony Cam/CCU



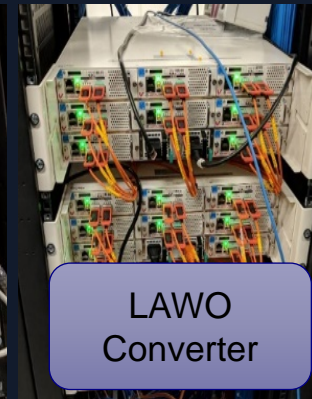
Cisco IP Switch



Avid
CG



CALREC
Audio



LAWO
Converter



Harmonic
Payout

Sample projects

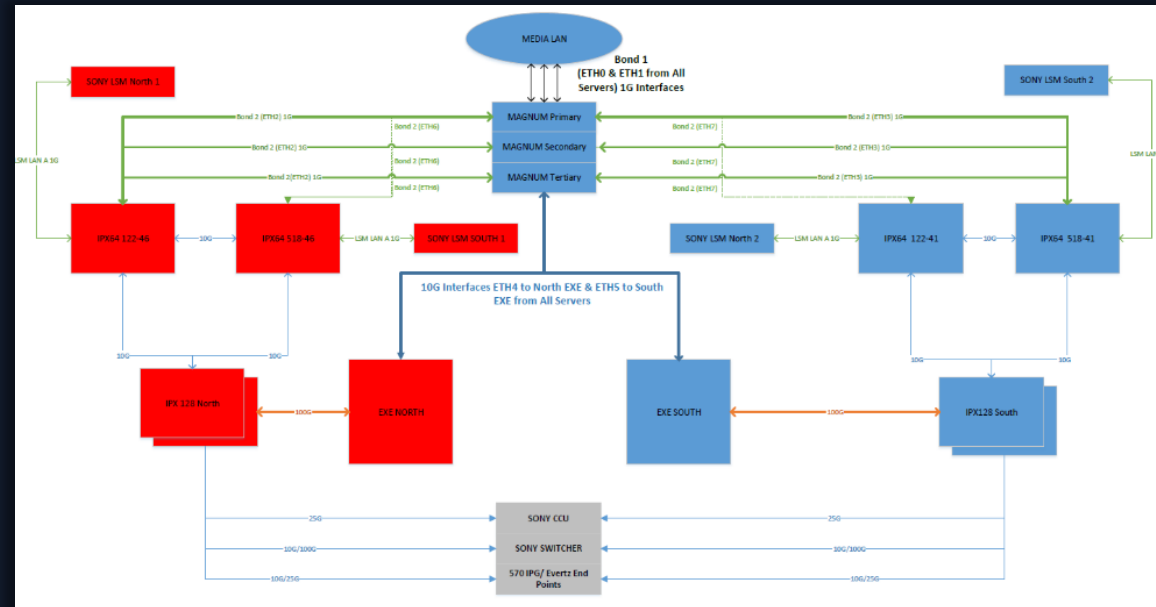
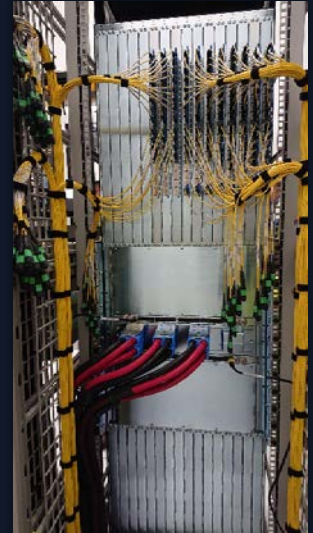
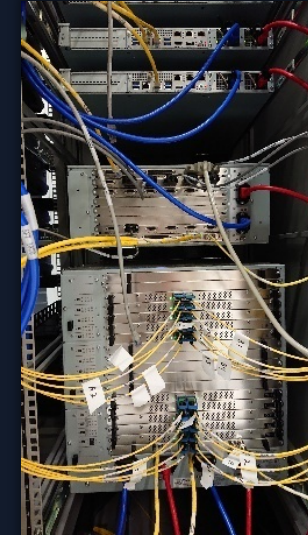
- 1st ST2110 Sony prime SI project & On-air Jan 26th, 2019



NYC facility: ST2110 HD covering 4 live Studios



On-Air May 2019



Major parts in the equation...

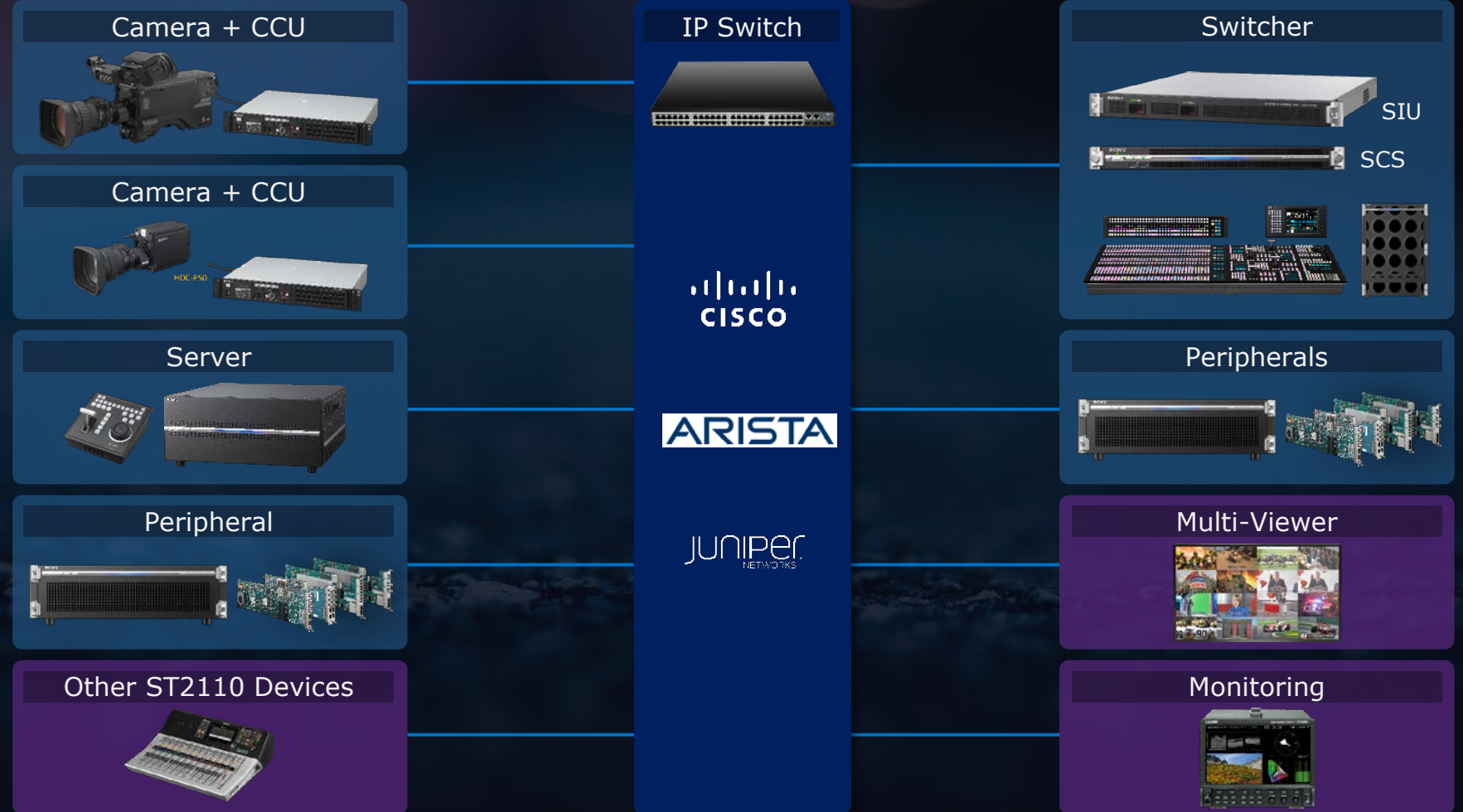
Cameras, switchers, monitors, replay servers, ... get new IP cards, ethernet instead of coax

Can use both (SDI,IP) to transition and preserve legacy equipment

System overall- needs control, and automation to be practical

The Production eco-system

IP
networked



The Production eco-system

Camera + CCU



IP Switch



Switcher



SIU



ST 2110







networked

Server



JUNIPER NETWORKS



Peripherals



Peripheral




Multi-Viewer



ST 2110

Other Devices



Monitoring



Networked Media Open Specification (NMOS)

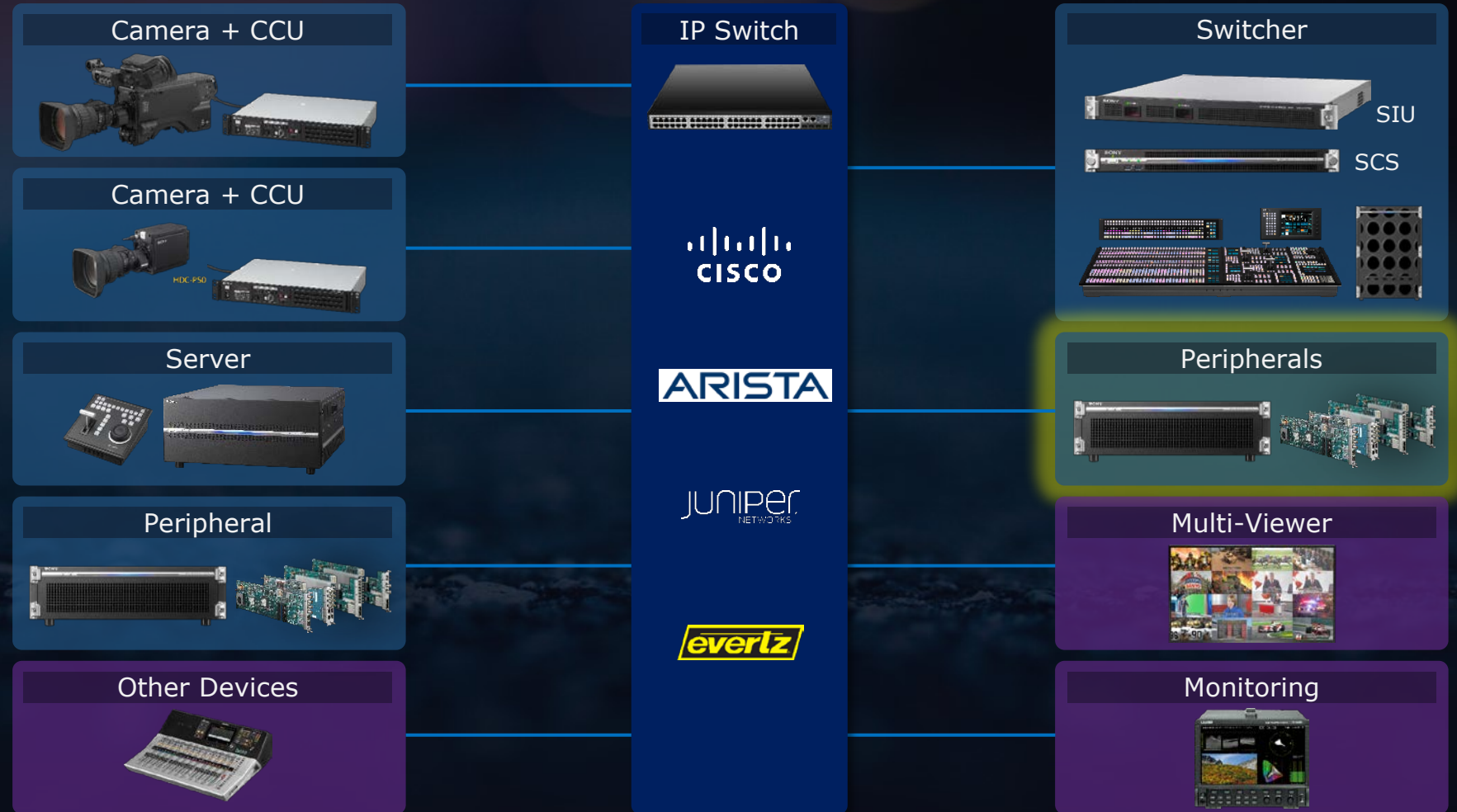
➡ IS-04	Discovery & Registration	v1.2	Released in Oct 2017
➡ IS-05	Connection Management (cross-point switching)	V1.0	Released in Oct 2017
IS-06	Network Control (topology discovery)	V1.0	Released in Oct 2018
IS-07	Event and Tally	V1.01	Released in Dec 2018
IS-08	Audio Mapping	N/A	Released

Look for...



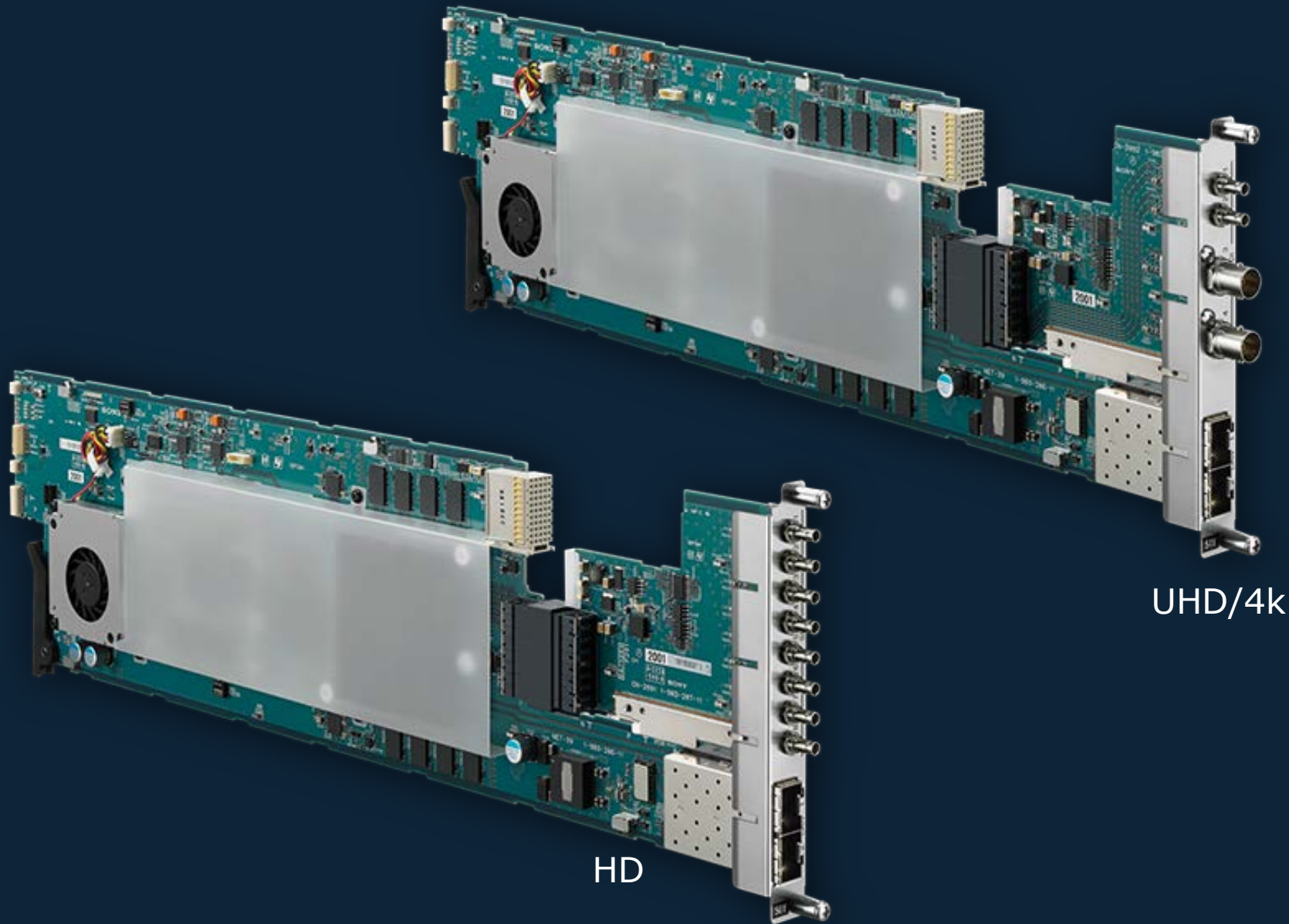
The Production eco-system

IP
networked

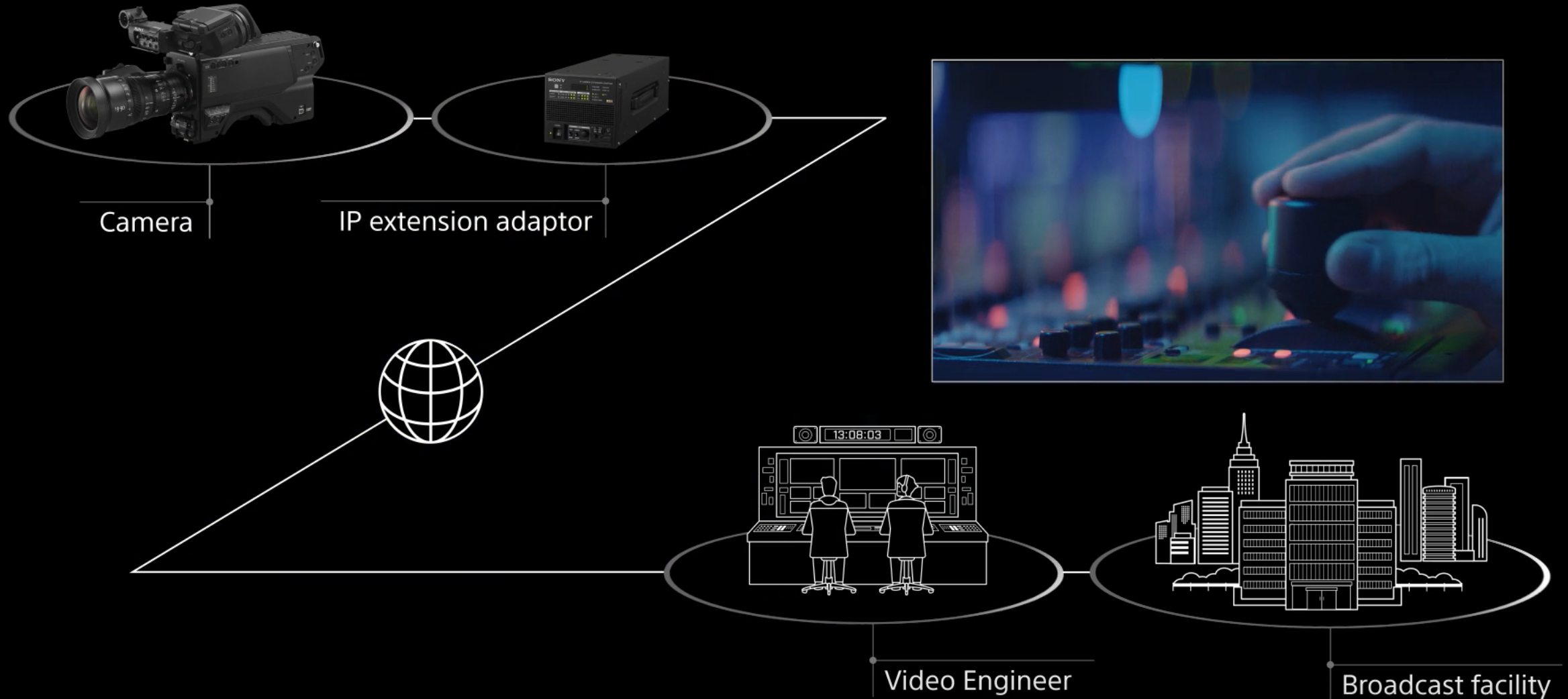


Edge Gateways

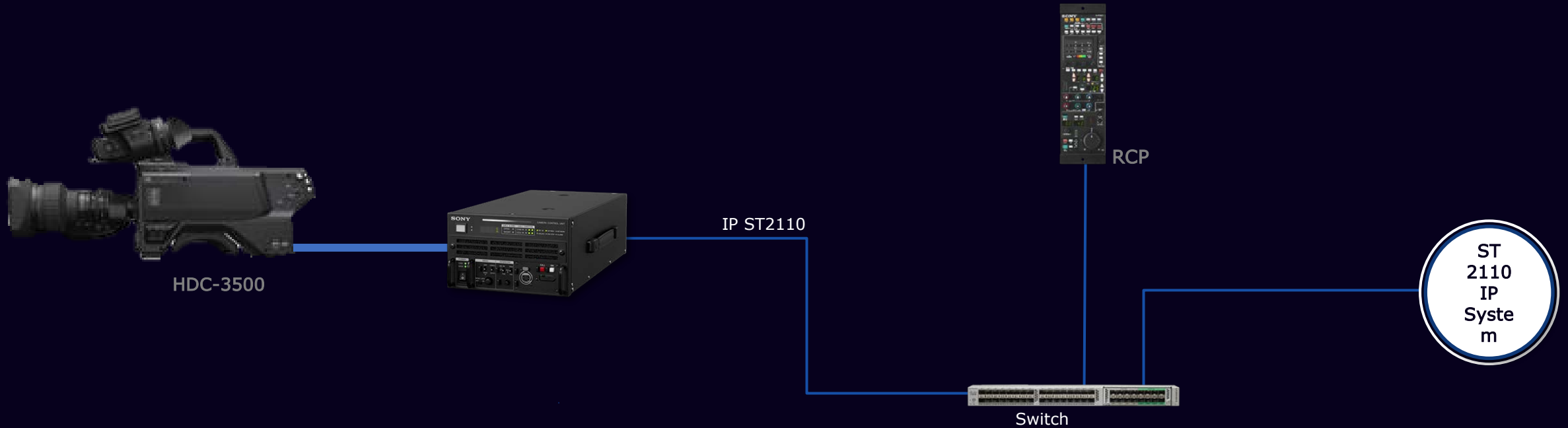
SDI IP Converter Boards



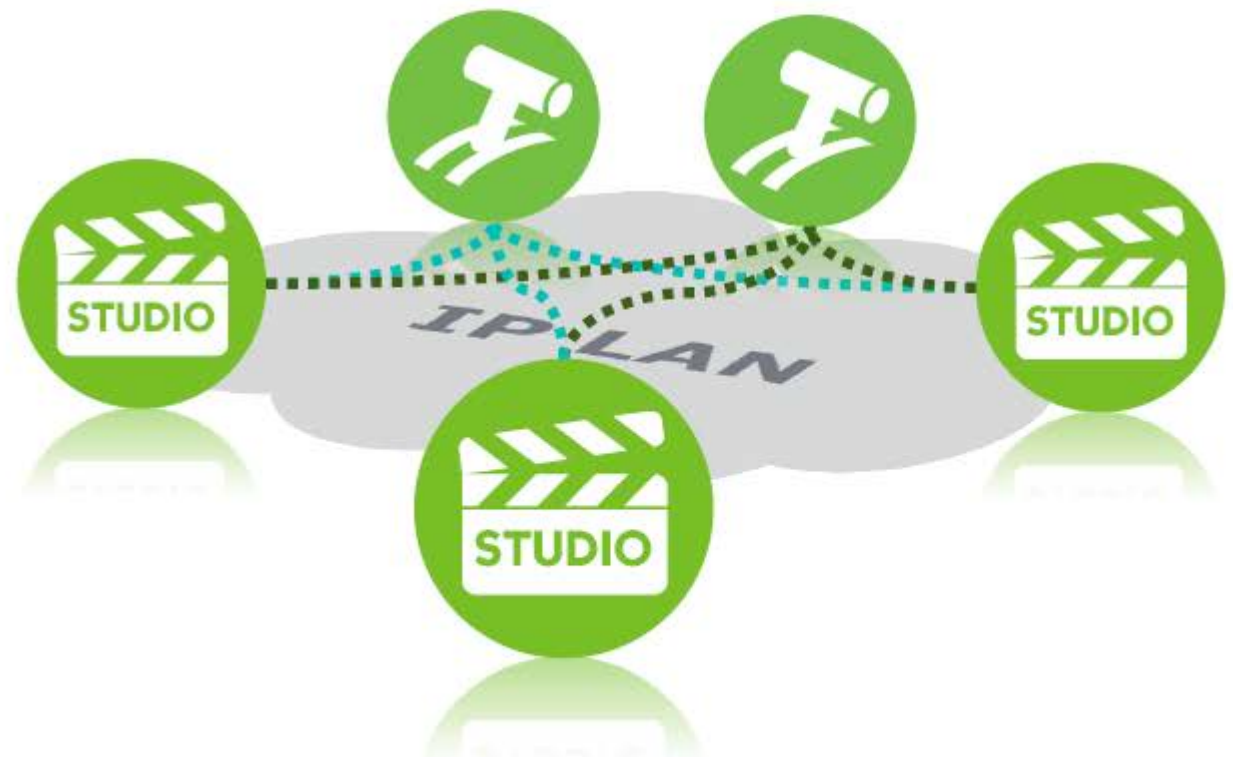
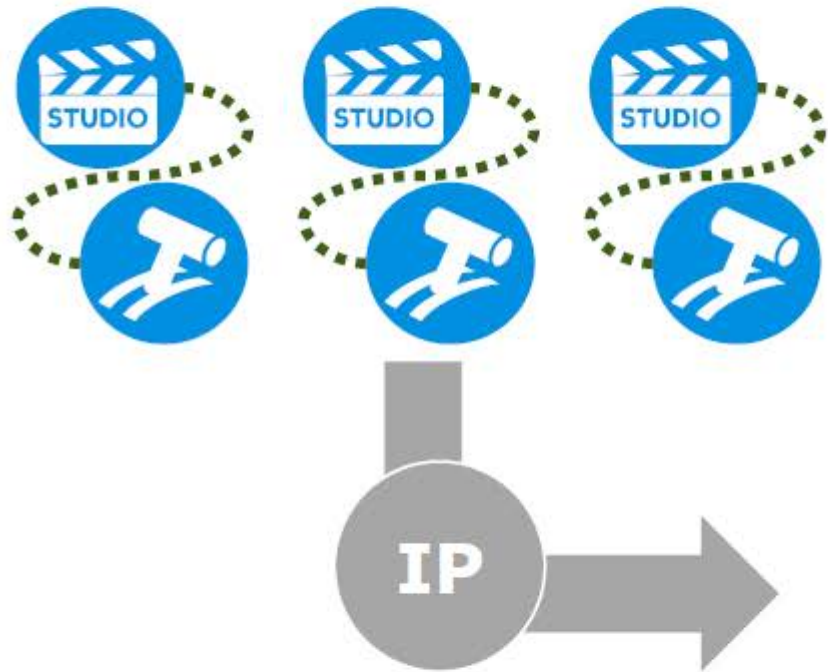
Remote signals and REMI



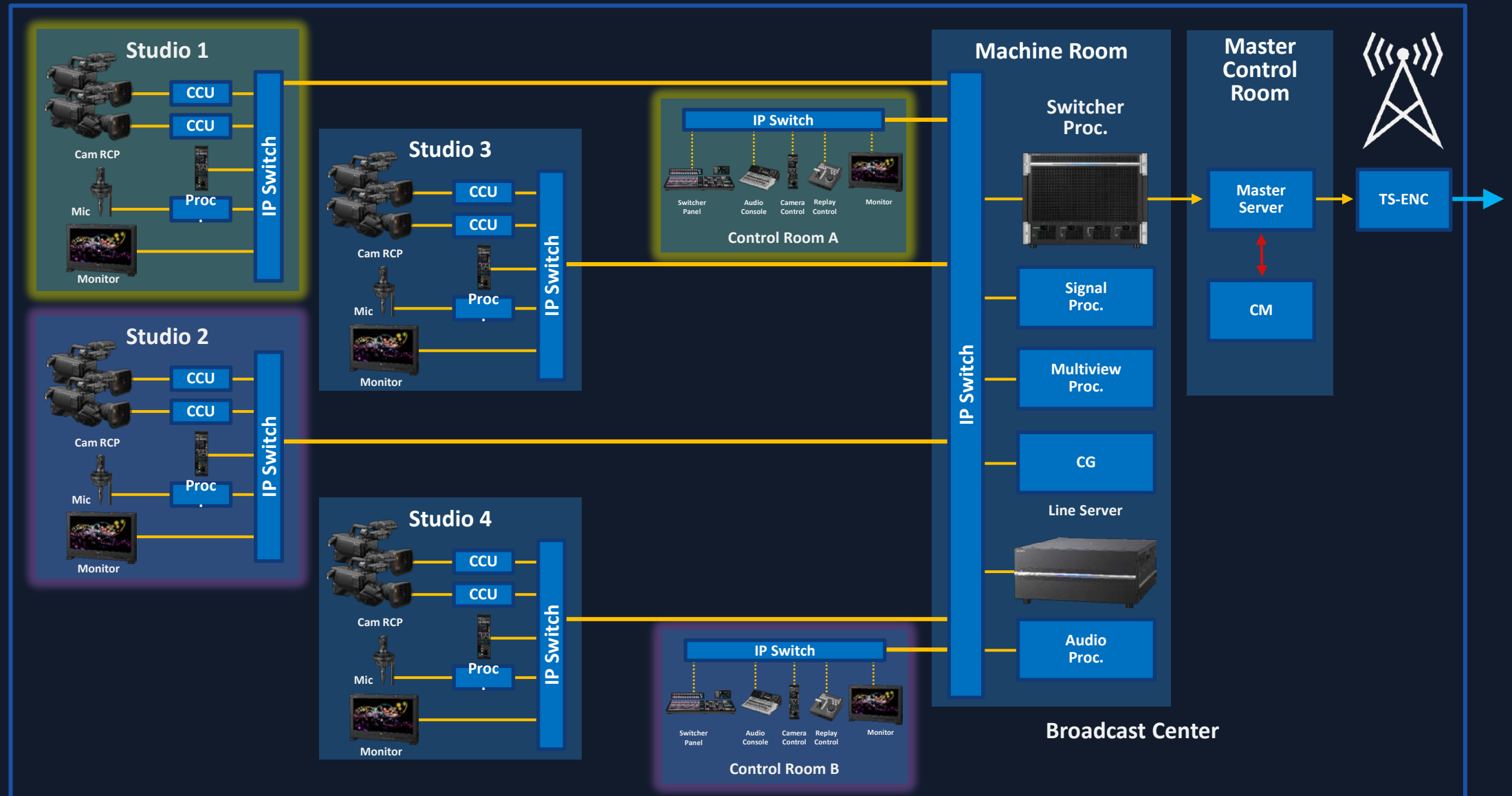
IP streams from the Camera



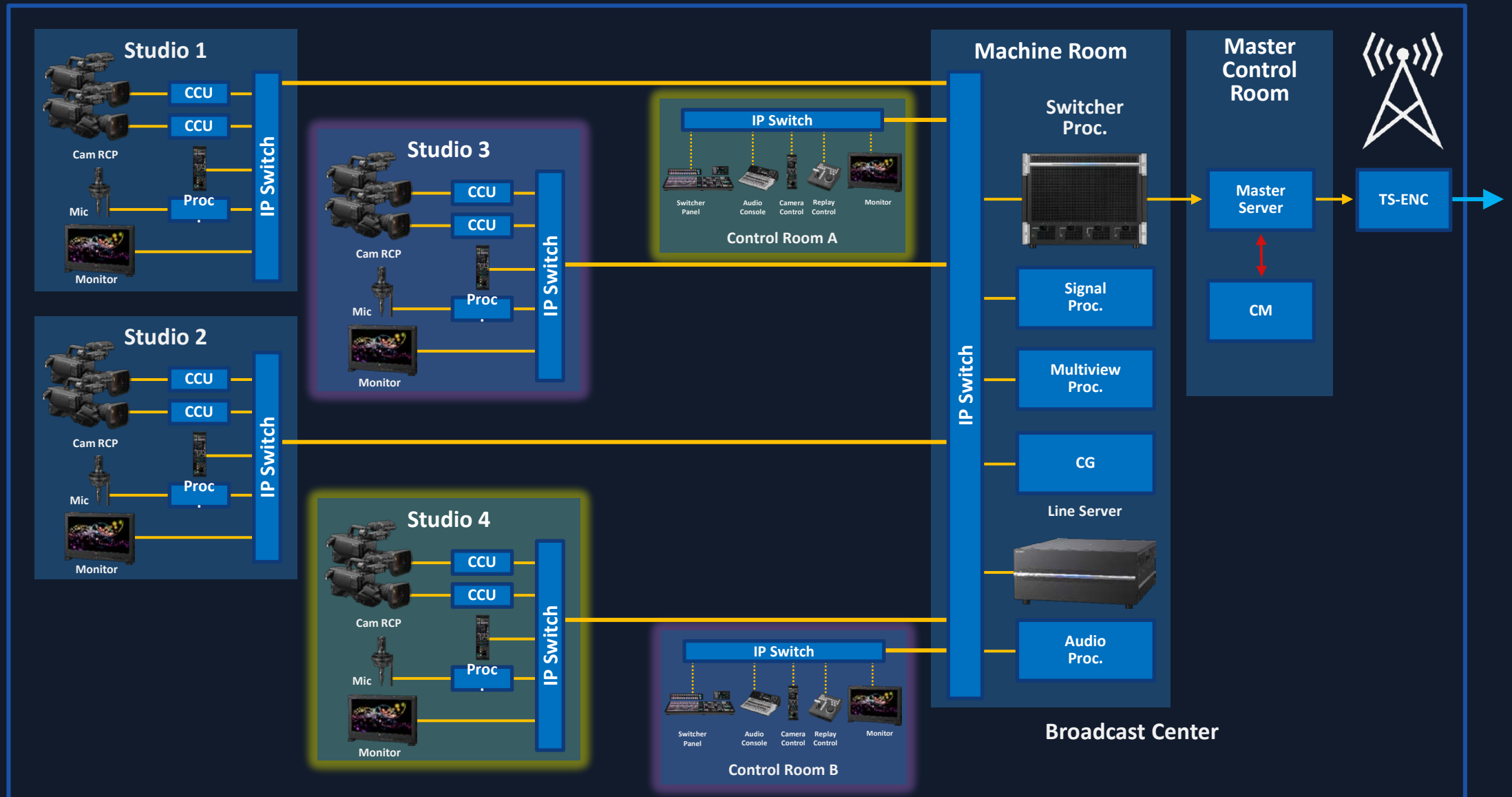
Shared **production rooms**



Facility Management: Studio- Control Room Assignment



Facility Management: Studio- Control Room Assignment



The IP toolset

- Major parts: IP controller, broadcast automation, network orchestration

The IP eco- system

AMWA
NMOS

IP Broadcast Controller



Orchestration/monitoring



Camera + CCU



Camera + CCU



Server



Peripheral



Other Devices



IP Switch



CISCO

ARISTA

JUNIPER
NETWORKS

everlz

Switcher



SIU



SCS



Peripherals



Multi-Viewer



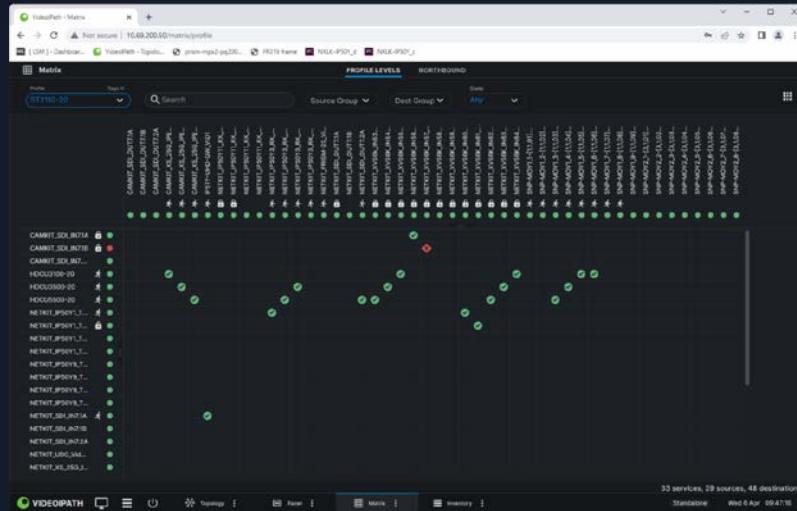
Monitoring



ST 2110

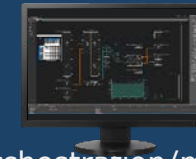


IP Broadcast Controller



Essential broadcast control functionality

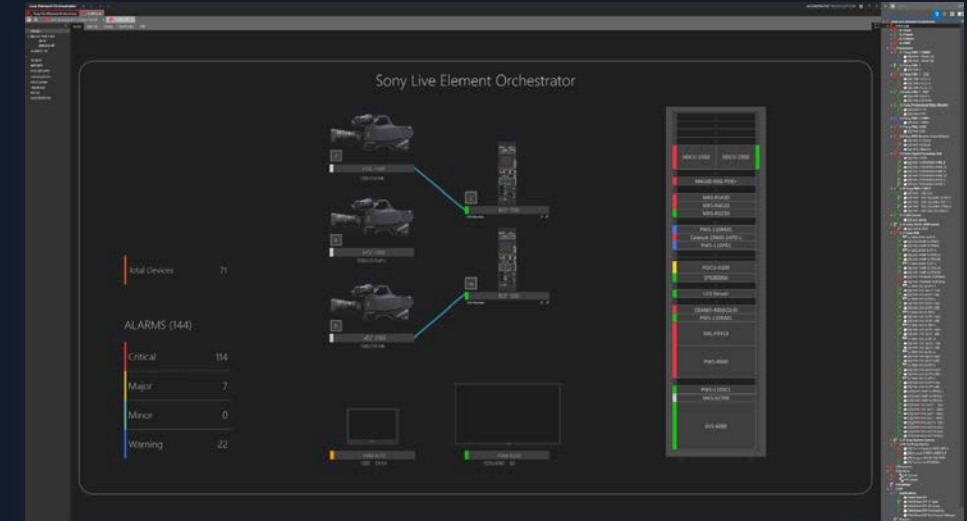
- IS-04 Device Discovery & Registration
- IS-05 Connection management, stream routing



Live Element Orchestrator

Orchestration/monitoring

g

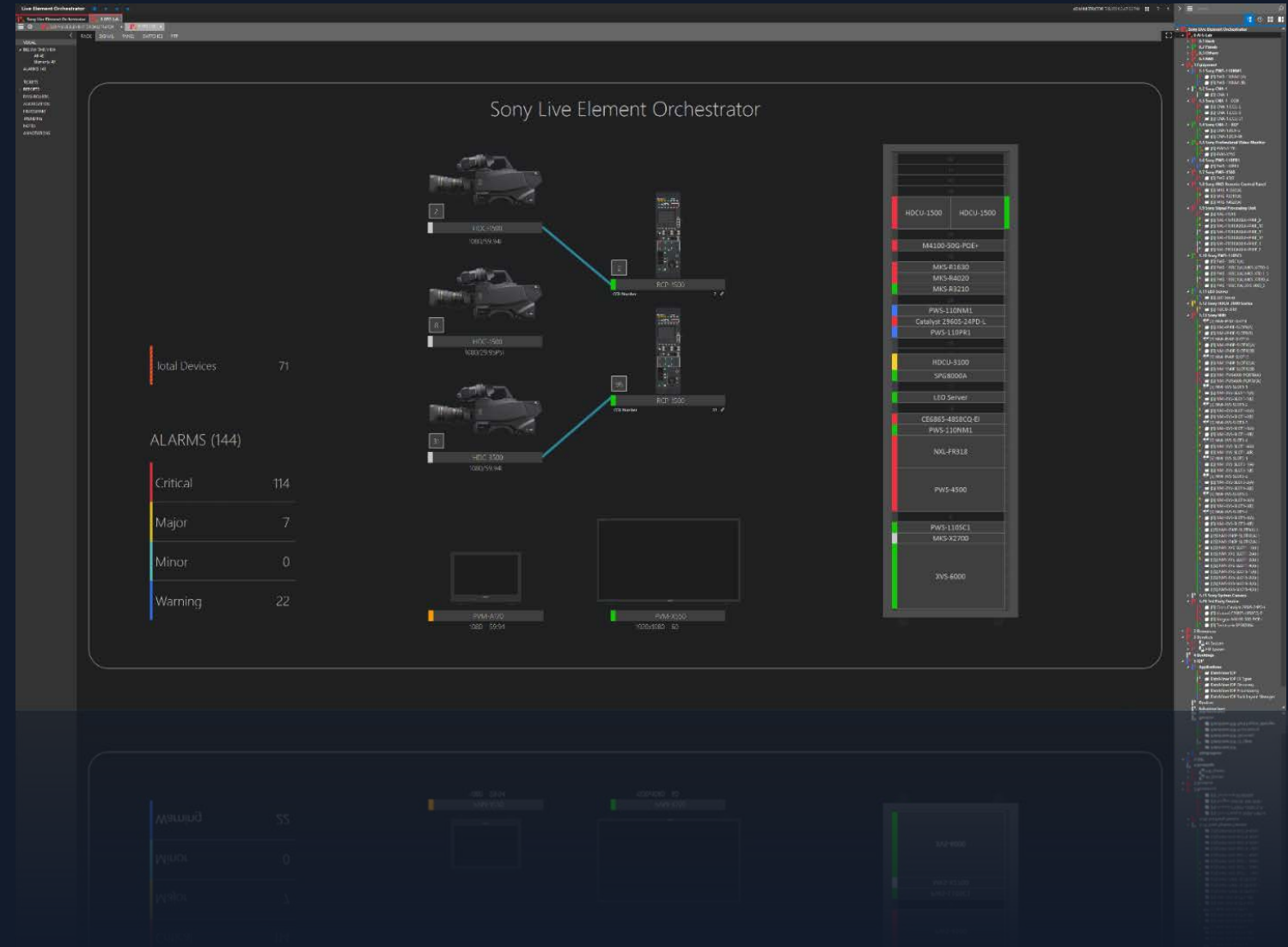


System Automation & Orchestration

- Device monitoring
- Device automation
- Resource management

Component Orchestration

Centralized monitoring which consolidates alarms and network/equipment status

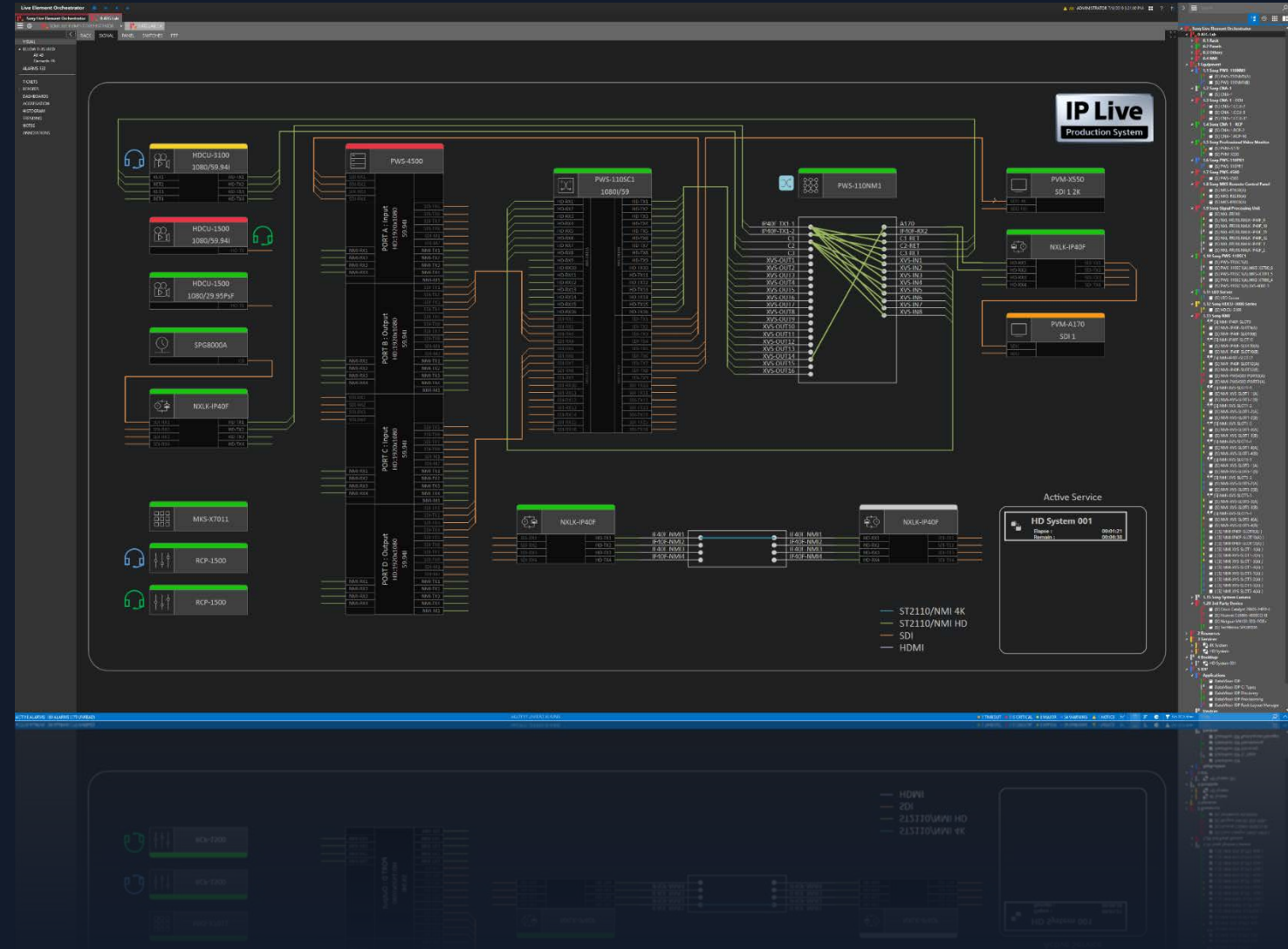


Component Orchestration

Centralized equipment configuration and setup so you can Save and Load preset configurations to groups of equipment

Resource Orchestration so video format changes can be managed and automated

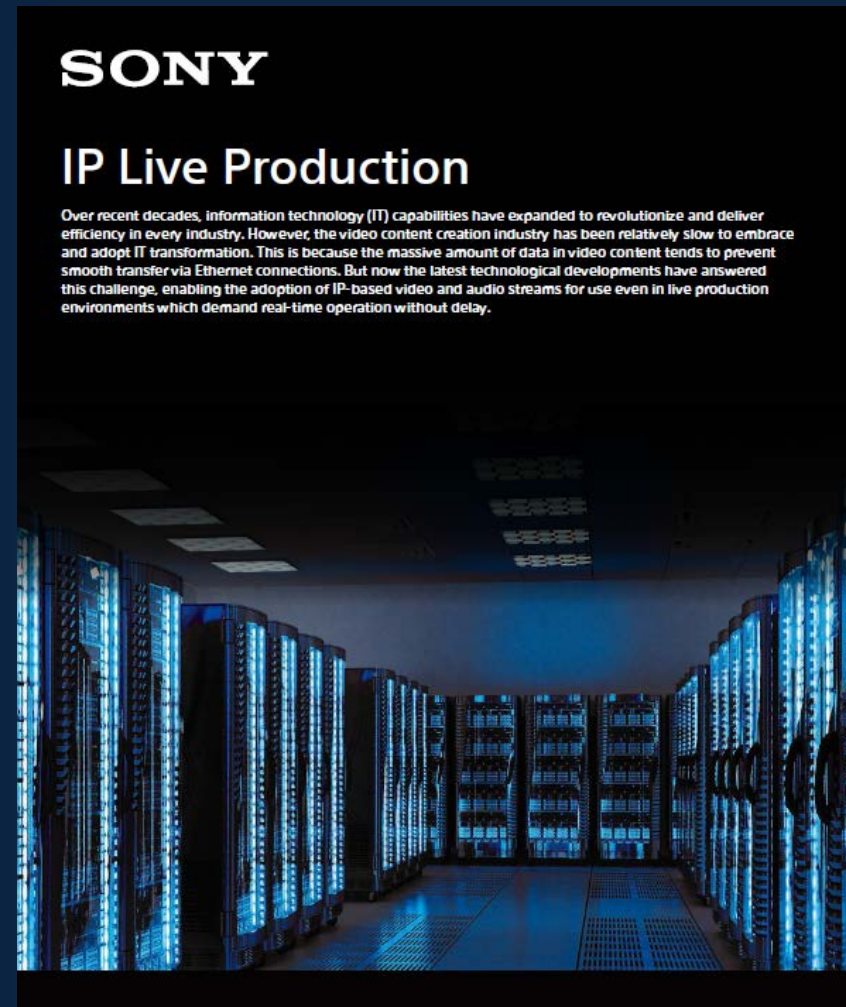
Central Dashboards for system management and lifecycle support




Conclusion

- Decisions ahead- business requirements/decisions about core products and services
- Moving past HD to take advantage of new platforms
- Prep early to understand machines ... plus staff/support impacts

- White Paper on IP Live
- IP Live overview brochure





IP Live

Production System

Transitioning to IP for Broadcast & Production

Steve Wynn

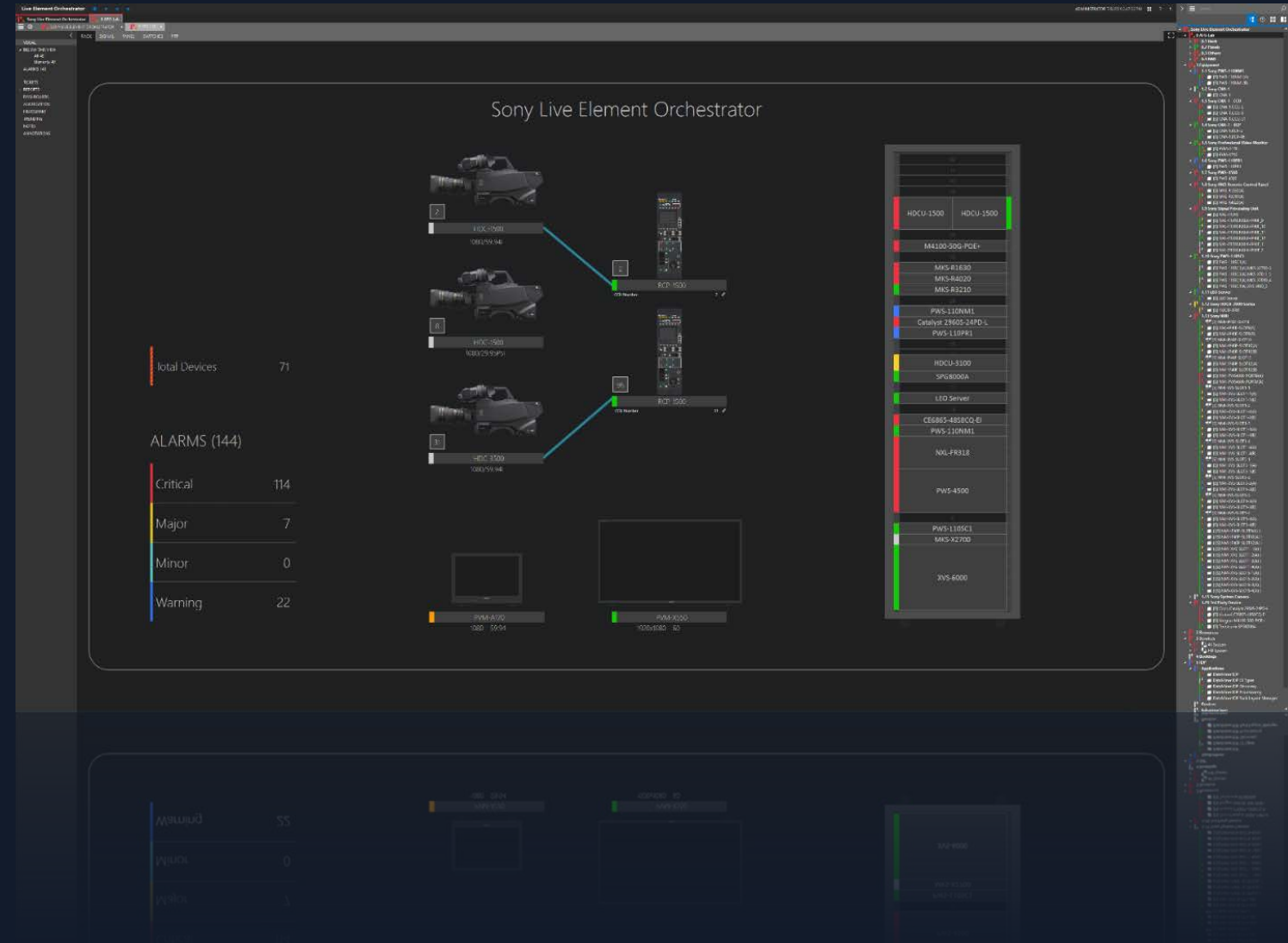
Sr. Solutions Architect

Sony Imaging Products & Solutions – Americas

Steven.Wynn@Sony.com

Live Element Orchestrator

Centralized monitoring which consolidates alarms and network/equipment status



Live Element Orchestrator

Panel assignments for hardware or software system control and macros



Sony Live Element Orchestrator

Diagram illustrating the Live Element Orchestrator interface, showing various hardware and software components connected to a central system.

Hardware components shown include:

- HDCU-1500 (1080/59.94i)
- HDCU-1500 (1080/23.976p)
- HDCU-1500 (1080/59.94i)
- RCP-1500
- RCP-1500
- PWS-110HMI
- PWM-A170 (SDI 1)
- PWM-A550 (SDI 1.2K)

Software components shown include:

- RCP2 CCU2
- RCP2 CCU8
- RCP2 CCU31
- X550 SDI1 2K
- X550 SDI1 4K
- X550 SDI2 2K
- X550 SDI2 4K
- X550 HDMI
- SPG CB A170
- 3100 A170
- RCP96 CCU2
- RCP96 CCU8
- RCP96 CCU31
- A170 SDI1
- A170 SDI2
- A170 HDMI

The interface also displays a grid of buttons for system control, including:

- CCU3
- CCU8
- CCU31
- 2011 V130
- 2015 V130
- HDMI V130
- 2011 3K X220
- 2015 3K X220
- 2011 4K X220
- 2015 4K X220
- HDMI X220
- V130 2K CB
- V130 3100